

# Data Lighthouse Service

## Illuminating Dark Data for Action



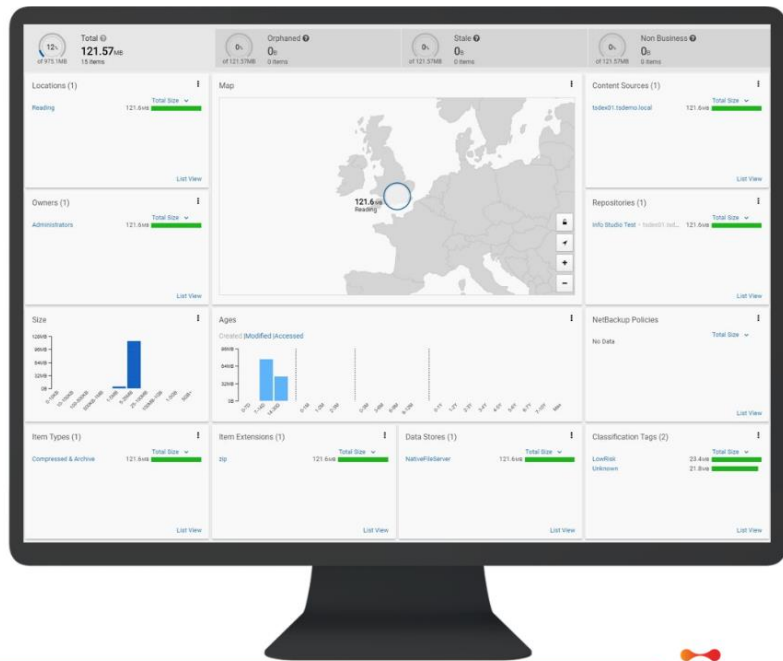
TrueSwift’s Data Lighthouse Service reduces storage costs, speeds up file migration projects and facilitates greater compliance. By identifying and understanding data that is redundant, obsolete or trivial (ROT), organisations can make critical business decisions on what they keep, archive, delete or migrate. Locating personal identifiable information quickly and easily is critical to ensure compliance with corporate and regulatory procedures, most notably GDPR.

Over time, organisations often have no clear view of the rapidly increasing volumes of data they hold, what it contains and whether it is in use or stagnant.

### Risky data

By file type

- 0 items identified as potential ransomware
- 122 MB of Zip files
- 15 Zip files, including 10, not accessed since it was created nearly 1 year ago.
- 5.5 % of files being backed up are Zip files.



A combination of leading software tools and expert consulting helps organisations tackle the complex and unstructured data landscape:

- Personal Identifiable Information presents challenges for GDPR.
- Orphaned data from ex-employees creates time and cost burdens due to lengthy back up cycles. Primary storage may not be necessary.
- PST files are a burden on storage as well as a great risk since they may hold sensitive data, but they are not indexed and can be anywhere on the network.
- Unstructured data such as copyrighted audio and video files on the network could be in breach of copyright laws.

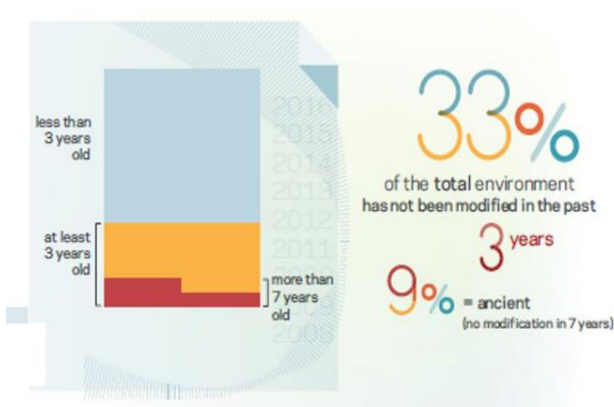
## Data Reports

Following in depth system analysis with specialist software, results are collated, and a series of data reports are produced and presented back to the client. Reports include:

- The total volume that has been 'classified' (e.g. PII sensitive data)
- The total file count and volume for specific data types based on set criteria such as the creation or modified date. (e.g. PST files, video and media files)
- Stale data profile (e.g. 5% is older than 3 years, orphaned or data types that are not considered business critical)
- Number and volume for this stale data
- A summary report of findings

## Stale Data

By created, accessed, or modified date



### What's the big deal?

- 494 Files are low value
- Files are protected with every full backup
- 29 Files are subject to discovery requests due to PII

### What can I do?

- Defensibly delete stale data
- Archive stale data
  - Searchable
  - On a retention schedule



Learn More: [www.trueswift.co.uk](http://www.trueswift.co.uk)

## About TrueSwift

TrueSwift is an independent specialist offering GDPR services and solutions, PST discovery and migration, archived data migration and eDisclosure solutions. Organisations of all sizes rely on TrueSwift's technical expertise and experience for the delivery of data management solutions that reduce their management and support costs while mitigating their risks of non-compliance with corporate and regulatory procedures.